

LO 26 SX

3.0 V Primary lithium - sulfur dioxide (Li-SO₂) High Drain capability Spiral D-size cell



For high drain applications up to 2.5 A continuous, 5 A pulse currents, possibly combined with exposure to extreme temperatures.

Key features

- High and stable discharge voltage
- Performance not affected by cell orientation
- Low self discharge rate (less than 3% after 1 year of storage at +20 °C)
- Hermetic glass-to-metal sealing
- Built-in safety vent (at the negative end of the cell)
- Restricted for transport (class 9)
- UL Component Recognition (File Number MH 15076)
- Meets shock, vibration and other environmental requirements of military specifications
- Made in the USA

Main applications

- Radiocommunications and other military applications
- Beacons and Emergency Location Transmitters
- Sonobuoys
- Missiles

etc...

Cell size reference

R20 - D

Electrical characteristics

(typical values for cells stored for one year or less)

Nominal capacity	7.75 Ah
<i>(at 250 mA +20 °C 2.0 V cut off. The capacity restored by the cell varies according to current drain, temperature and cut off).</i>	
Open circuit voltage (at +20 °C)	3.0 V
Nominal voltage (at 0.5 A +20 °C)	2.8 V
Maximum recommended continuous current	2.5 A
<i>(to avoid over-heating. Higher currents possible, consult Saft).</i>	
Pulse capability : <i>Up to 5 A. Varies according to pulse characteristics (frequency, duration), temperature, cell history (storage conditions prior to usage) and the application's acceptable minimum voltage. Consult Saft.</i>	

Storage (recommended) (possible without leakage)	+30 °C/+86 °F max -60 °C (-76 °F) / +85 °C (+185 °F)
---	--

Operating temperature range	-60 °C (-76 °F) / +71 °C (+160 °F)
-----------------------------	---------------------------------------

(Short excursions up to 85 °C possible at currents below 1 A).

Physical characteristics

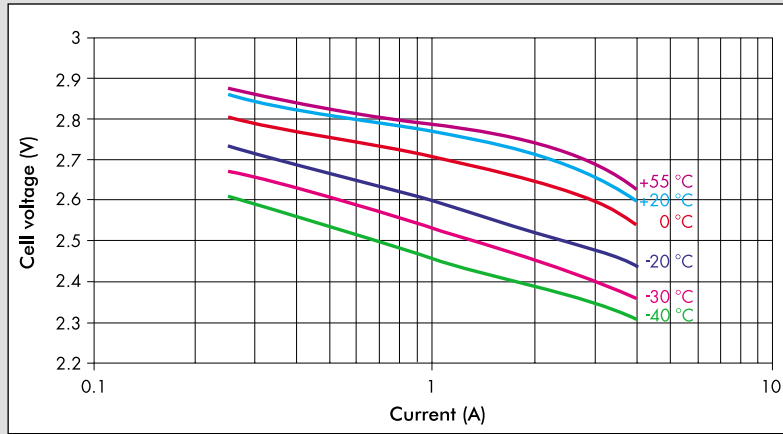
Diameter (max)	34.2 mm (1.345 in)
Height (max; finish without radial tabs)	59.3 mm (2.33 in)
Typical weight	85 g (3 oz)
Li metal content	2.4 g

Standard cell comes with resin potting in the topshell area and two radial 0.15 mm - thick nickel tabs

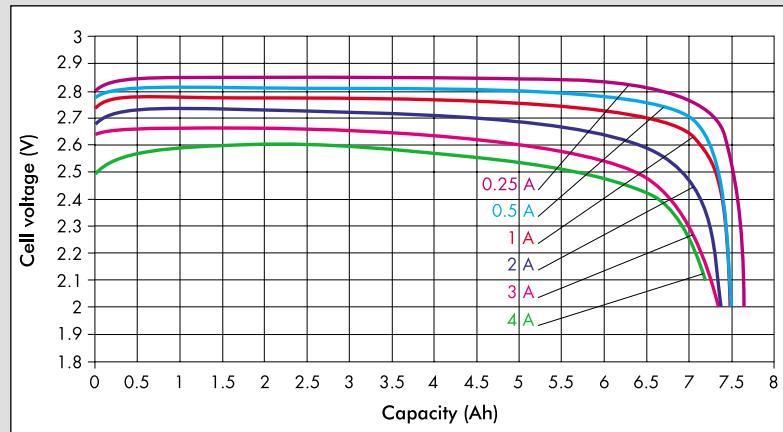
Finish with positive button on request

Finish with individual fuse on request

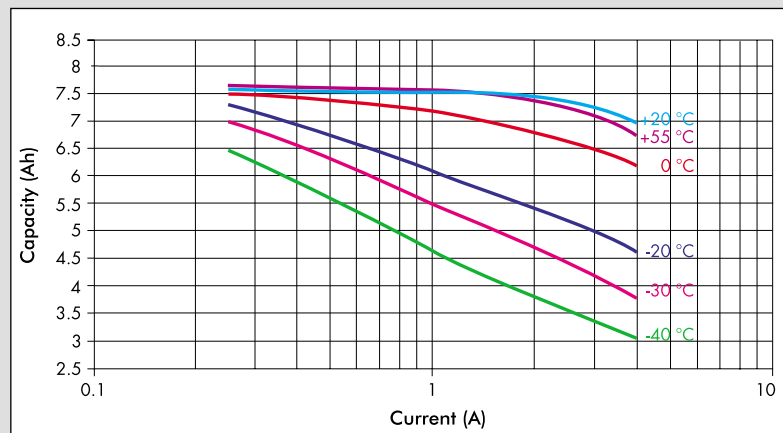
Voltage at mid-discharge versus Current and Temperature (2.0 V cut off)



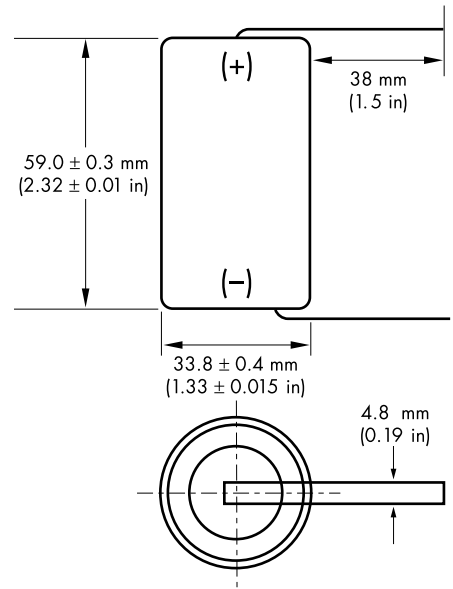
Typical discharge profiles at +20°C



Capacity versus Current and Temperature (Continuous discharges - 2.0 V cut off)



LO 26 SX



Overall dimensions

Handling precautions

- Cell is pressurised.
- Do not puncture, open or mutilate.
- Do not obstruct the safety vent mechanism.
- Do not short circuit or charge.
- Do not expose to fire or temperatures above 70 °C (160 °F).



12, rue Sadi Carnot
93170 Bagnole - France
Tel +33 1 49 93 17 25
Fax +33 1 49 93 19 69

313, Crescent Street
Valdese NC 28690 USA
Tel +1 (828) 874 41 11
Fax +1 (828) 879 39 81

Internet: <http://www.saftbatteries.com>

Doc. N° 31033-2-0902
Published by the Communications Department

Information in this document is subject to change without notice and becomes contractual only after written confirmation by Saft.