

WORKABOUT PRO G2 WA3019 BACKUP BATTERY REPLACEMENT

1. Introduction

This document describes the procedure for removing and replacing the backup battery in the WORKABOUT PRO G2 hand-held computer.



Warning: *The removal and installation of this battery must be performed using the appropriate anti-static devices. If unavailable, discharge static from your body by touching a grounded metallic object before opening any covers on the unit.*

2. Backing Up the WORKABOUT PRO



Important: *Before removing the main battery of the computer, use the Total Recall program to backup the application files and device settings.*

Removing power from the main logic board as described in this procedure will cause the device to return to factory default settings. A Total Recall backup profile will allow these settings to be easily restored when the procedure is complete.

For instructions on how to create and restore a Total Recall backup profile, consult the WORKABOUT PRO User Manual, available for download at <http://www.pSIONteklogix.com/teknet>.

3. Battery Removal

1. Open the battery compartment on the back of the unit, and remove the main battery. Note the positions of the backup battery and the power DIP switch on your WORKABOUT PRO model as shown here:

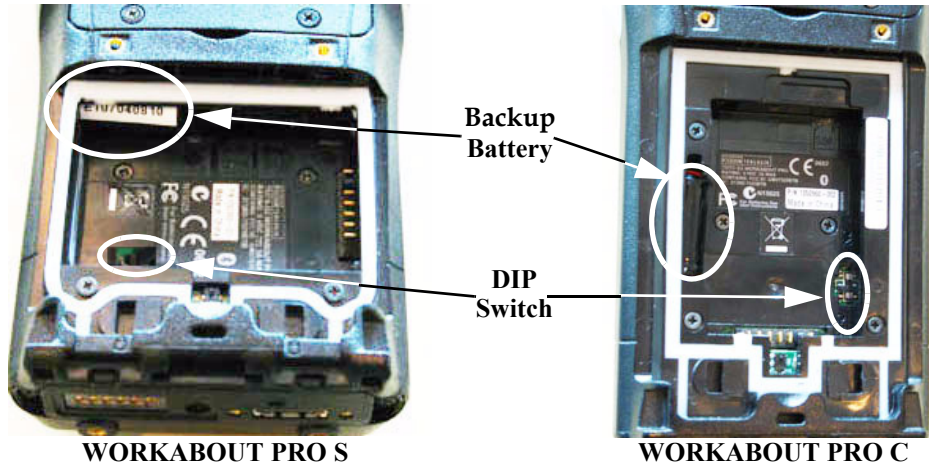


Figure 1 Layout of Battery Compartment

2. Using a small screwdriver, move the DIP switch to the “OFF” or “2” position to turn off power to the main logic board.

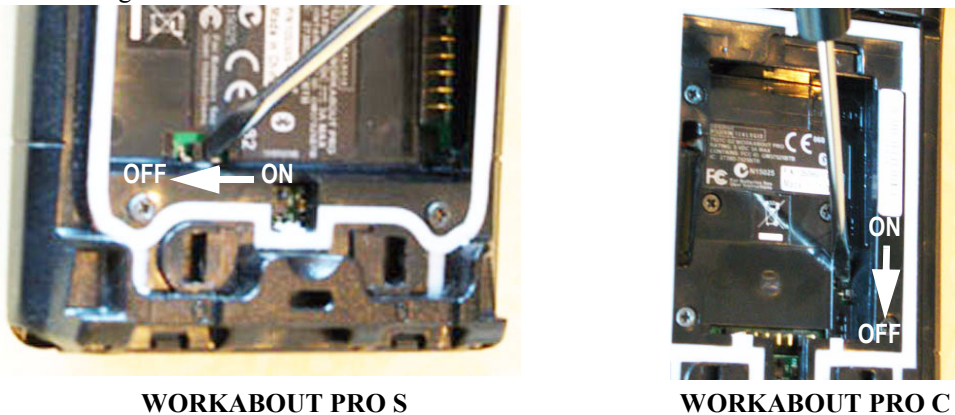
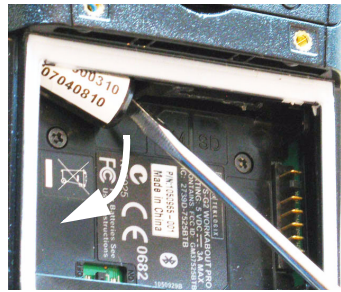


Figure 2 Moving the Internal Power DIP Switch

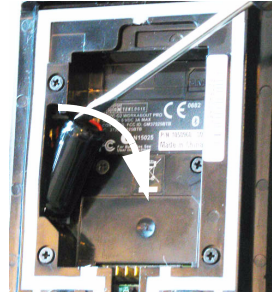


Note: *Turning this switch off disables the power circulating around the main logic board making installation of expansion modules and backup batteries safer.*

3. Insert a small flathead screwdriver between the battery and the casing and lever the end of the backup battery out of the compartment.



WORKABOUT PRO S



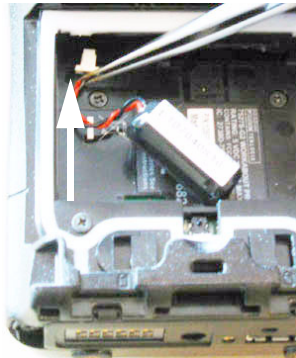
WORKABOUT PRO C

Figure 3 Removing the Backup Battery

4. Remove the battery entirely from the battery compartment, and gently pull it directly away from the connector until the plug detaches.

4. Battery Installation

1. Line up the battery plug with the connector on the main logic board. Orient the plug with the red wire on the right. Use a pair of high-quality precision tweezers to push the plug firmly onto the connector.



WORKABOUT PRO S



WORKABOUT PRO C

Figure 4 Installing the Backup Battery

2. Push the backup battery snugly into the battery compartment.
3. Using a small screwdriver, restore power to the main logic board by moving the DIP switch to the “ON” or “1” position. (Refer to Figure 2.)
4. Replace the main battery and close the battery compartment.

5. Post-Procedure Instructions

The terminal can now be restored to its original state using the Total Recall backup profile created in Step 2.

The WA3019 backup batteries are shipped partially charged. After performing this procedure, it is therefore important to also install a fully-charged main battery to recharge the backup battery to full capacity.



Note: Users may continue to see the low backup battery warning for a period of time after replacing the battery, until the backup battery has been properly recharged by the main battery.

For more information regarding the backup battery, including technical specifications, proper usage and storage practices, and tips for prolonging battery life and run time, consult the WORKABOUT PRO User Manual available for download at <http://www.pSIONTEKLOGIX.com/teknnet>.

To further assist in prolonging battery life, make sure the WORKABOUT PRO has the latest recommended power micro firmware installed. More information on how to obtain the latest recommended release of the power micro firmware can be found at <http://www.pSIONTEKLOGIX.com/teknnet>.

COMPANY HEADQUARTERS

Psion Teklogix Inc.
2100 Meadowvale Boulevard
Mississauga, Ontario, Canada
L5N 7J9 Tel: +1 905 813 9900

SUPPORT SERVICES

For local support services, go to:
www.pSIONTEKLOGIX.com/service-and-support.htm

October 27, 2009

8000192 Rev. A Sheet 2 of 2