

Protection Circuit Module

For 18.5V Li-ion/Li-polymer Battery Pack

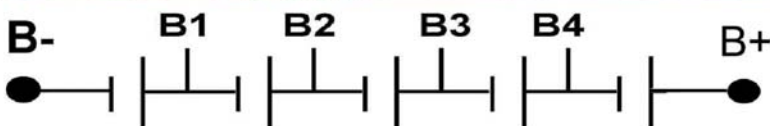
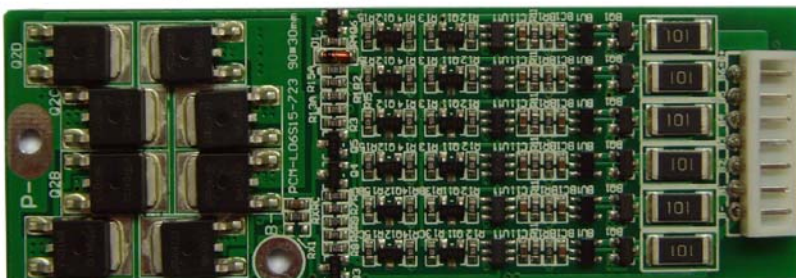
000FFI

No.	Test item		Criterion
1	Voltage	Charging voltage	DC21V CC/CV
		Balance voltage for single cell	4.20±0.025V
2	Current	Balance current for single cell	84±10mA
		Current consumption for single cell	≤20μA
		Maximal continuous discharging current	16A
3	Overcharge Protection	Over charge detection voltage	4.25±0.025V
		Over charge detection delay time	0.5S~2S
		Over charge release voltage	4.05±0.05V
4	Over-discharge Protection	Over discharge detection voltage	2.50±0.062V
		Over discharge detection delay time	10mS~300mS
		Over discharge release voltage	2.50±0.062V
5	Over Current Protection	Over current detection voltage	0.20±0.02V
		Over current detection current	50±10A
		Detection delay time	5ms~20ms
		Release condition	Automatic Recovery
6	Short Protection	Detection condition	Exterior short circuit
		Detection delay time	200-500us
		Release condition	Automatic Recovery
7	Resistance	Protection circuitry	≤30mΩ
8	Temperature	Operating temperature range	-40~+85℃
		Storage temperature range	-40~+125℃
9	Size		L90*W30*T5(mm)

P+=B+=Charge+/Discharge+

P- =Charge-/Discharge- SIZE:L90*W30*T5mm

Remarks:



* Characteristics subject to change without notice.