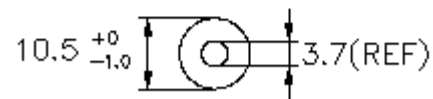
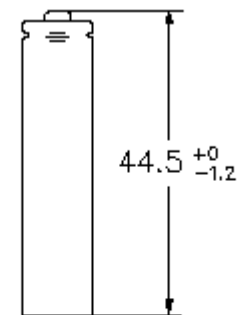


### DATA SHEET

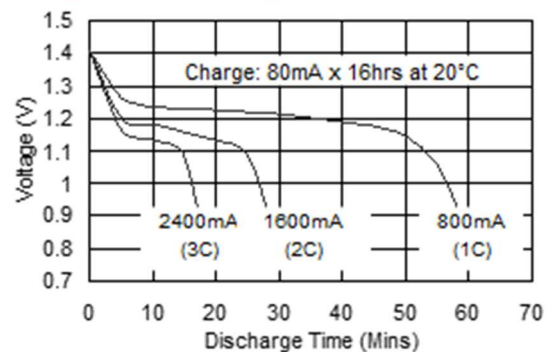
Model No.: GP80AAAHCL

Type	Rechargeable Nickel Metal Hydride Cylindrical Cell
Nominal Dimension (with Sleeve)	Diameter = 10.5mm Height = 44.5mm
Applications	Recommended discharge current 80 to 2400mA
Nominal Voltage	1.2V
Capacity	Rated: 800mAh Typical: 850mAh When discharged at 160mA to 1.0V at 20°C
Charging Condition	80mA for 16 hrs at 20°C
Charge Retention	70% of nominal capacity after cell storage at 20°C for 12 months When discharged at 160mA to 1.0V at 20°C
Fast Charge	400mA to 800mA (0.5 to 1C) charge termination control recommended control parameters: -ΔV : 0-5mV DT/dt : 0.8°C/min (0.5 to 0.9C) 0.8 - 1°C/min (1C) TCO : 45 - 50°C Timer : 105% nominal input (for ref. only)
Service Life	>300 cycles (IEC61951-2(2017)-7.5.1.2) >100 cycles (IEC61951-2(2017)-7.5.1.4) >500 cycles (refer to GP product specification)
Continuous Overcharge	80mA maximum current for 1 year. No conspicuous deformation and/or leakage
Weight	13.4g
Internal Resistance	Average 40mΩ upon fully charged (Max. 60 mΩ) at 1000Hz
Max. Charge Voltage	1.5V at 80mA charging
Ambient Temperature Range	Standard Charge: 0 to 45°C Fast Charge: 10 to 45°C Discharge: -20 to 50°C Storage: -20 to 35°C Storage(1week): -20 to 60°C

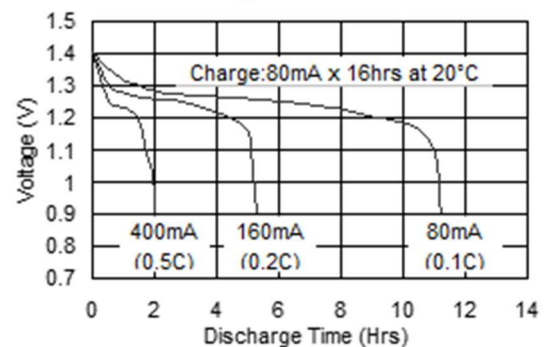


Unit: mm

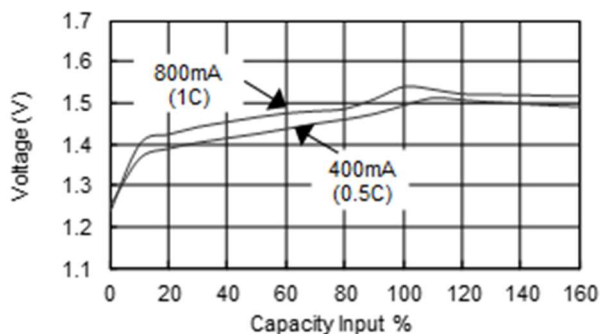
#### High Rate Discharge



#### Low Rate Discharge



#### Fast Charge (Charge Control Required)



The above information is generally descriptive only and is not intended as guarantee or warranty. Cell and battery specifications are subject to change without notice. All descriptions or warranties are contained solely in specification sheets accompanying outside those described in this document.

MRS6452 rev.01